

TECHNICAL DATA SHEET

DESCRIPTION

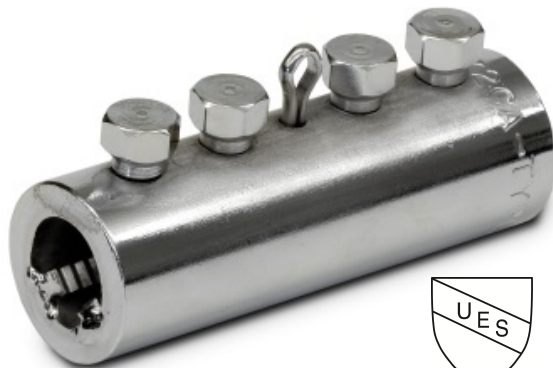
The D250SCA Bar Lock is a Type 1 rebar coupler consisting of a thick walled tube, specially designed lock shear bolts, serrated grip rails, and a center stop pin. The D250SCA is made from USA melted and rolled steel.

APPLICATION

The D250SCA Bar Lock Coupler is used to provide a continuous path of mechanical reinforcing between two pieces of the same diameter rebar.

PRODUCT SPECIFICATION

- Rebar sizes #3 (13mm) through #18 (57mm)
- Available in plain, epoxy coated or galvanized finish (call for availability for galvanized finish)
- Designed to achieve Type 1 splice when used with grade 60 rebar



FEATURES

- Quick and easy installation
- No bar end preparation
- Installation at the job site
- Used in tension, compression and seismic applications

BENEFITS

- Saves time and money
- No fabrication required
- One product for all applications

TECHNICAL DATA

Bar Size Designation			Product Specifications			Coupler Designation	Bolt Specifications			Barrel Stamp Identification
US	Metric (mm)	CN (M)	Outside Diameter (in.)	Length (in.)	Weight (lbs.)		Bolt Qty.	Head Size (in.)	Nominal Shear Torque*	
#3	[10]	-	1.3	3.9	1.24	3 S/CA	4	0.5	40	3S...CA
#4	[13]	[10]	1.3	3.9	1.24	4 S/CA	4	0.5	40	4S...CA
#5	[16]	[15]	1.7	4.5	2.11	5 S/CA	4	0.5	80	5S...CA
#6	[19]	[20]	1.9	6.3	3.57	6 S/CA	6	0.5	80	6S...CA
#7	[22]	-	1.9	8.0	4.30	7 S/CA	8	0.5	80	7S...CA
#8	[25]	[25]	2.4	10.2	6.10	8 S/CA	8	0.625	180	8S...CA
#9	[29]	[30]	2.9	9.0	11.88	9 S/CA	6	0.75	350	9S...CA
#10	[32]	-	2.9	11.5	15.17	10 S/CA	8	0.75	415	10S...CA
#11	[36]	[35]	3.1	14.0	20.50	11 S/CA	10	0.75	415	11S...CA
#14	[43]	[45]	3.5	16.5	27.57	14 S/CA	12	0.75	475	14S...CA
#18	[57]	[55]	4.3	27.2	62.00	18 S/CA	20	0.75	475	18S...CA

Note in place of the "...", each Bar Lock Coupler is marked with a tracking code used for full manufacturing traceability.

* Foot pounds

** When used in conjunction w/ epoxy-coated Grade 60 rebar, 125% Fy strength is developed.

Galvanized Finish available. Call for details.

APPROVALS / COMPLIANCE

- ACI 318 Type 1 (ASTM A615 or A706, Grade 60)
- IAPMO UES Listed (Er-319)
- AASHTO
- International Build Code (IBC)

INSTALLATION

1. A high-quality, 1" - drive pneumatic, impact wrench and towable air compressor are required for sizes #8 thru #18.
2. The requirements for air flow is 100 psig of operating pressure and 185 cfm of delivered air to the impact wrench through a ¾" - 1" air hose.
3. Sizes #4 thru #7 may be installed with smaller impact wrenches.
4. Prior to bolt tightening, the serrated rails MUST remain aligned in the same position as they were manufactured. If damaged or knocked out of alignment while positioning, installation MUST cease and a new coupler used to replace damaged coupler.
5. Bolt tightening MUST be done in a random alternating pattern similar to tightening the lug nuts on an automobile wheel (i.e., 2-4-1-3).
6. By using the recommended and required tools, installers will see a minimization of installation time and energy. This translates to increased efficiency and cost savings.

HOW TO ORDER

Specify: (1) quantity, (2) name, (3) bar size, (4) finish
 Example: 500, D250SCA Bar Lock Rebar Couplers, #18, Epoxy Coated

TECHNICAL DATA SHEET

ORDERING INFORMATION

BAR LOCK® S/CA-SERIES COUPLERS - BLACK

Product Code	Description	Weight
400200	#3 [10MM]	1.22 LB
400200	#4 [13MM]	1.22 LB
400201	#5 [16MM]	2.10 LB
400202	#6 [19MM]	3.50 LB
400203	#7 [22MM]	4.30 LB
400204	#8 [25MM]	7.48 LB
400205	#9 [29MM]	11.81 LB
400206	#10 [32MM]	15.07 LB
400207	#11 [36MM]	20.50 LB
400208	#14 [43MM]	27.50 LB
400209	#18 [57MM]	64.00 LB

BAR LOCK® S/CA-SERIES COUPLERS - EPOXY

Product Code	Description	Weight
400210	#3 [10MM]	1.25 LB
400210	#4 [13MM]	1.25 LB
400211	#5 [16MM]	2.12 LB
400212	#6 [19MM]	3.59 LB
400213	#7 [22MM]	4.38 LB
400214	#8 [25MM]	6.15 LB
400215	#9 [29MM]	11.90 LB
400216	#10 [32MM]	15.10 LB
400217	#11 [36MM]	20.14 LB
400218	#14 [43MM]	27.50 LB
400219	#18 [57MM]	62.00 LB

WARRANTY (ACCESSORIES)

Limited Warranty. Dayton warrants, for a period of 60 days from the date of shipment (three years from the date of shipment in the case of formwork, excluding any consumable Products included with such formwork), that Products and any associated application drawings and engineering services provided by Dayton ("Ancillary Services") will be free from defects in material and workmanship and, in the case of custom designed formwork, that the formwork will meet the specifications set forth in the design drawings approved by Dayton and Customer. Any claim under this warranty must be made in writing within such warranty period. If any Product and/or Ancillary Service covered by a timely claim are found to be defective, Dayton will, within a reasonable time, make any necessary repairs or corrections or, at Dayton's option, replace the Product. Unless pre-authorized by Dayton in writing, Dayton will not accept any charges for correcting defects or accept the return of any Product. This warranty will not apply to any Products that have been subjected to misuse, neglect, storage damage, misapplication, accident or any other damage caused by any person other than Dayton, or that have not been maintained in accordance with Dayton's specifications. THIS LIMITED WARRANTY IS IN LIEU OF ALL OTHER WARRANTIES AS TO THE PRODUCTS AND ANCILLARY SERVICES. DAYTON MAKES NO OTHER WARRANTIES OR GUARANTEES, EXPRESS OR IMPLIED, INCLUDING ANY WARRANTY OF MERCHANTABILITY, FITNESS FOR A PARTICULAR PURPOSE OR OTHERWISE. THE REMEDIES SET FORTH IN THIS SECTION ARE CUSTOMER'S EXCLUSIVE REMEDY FOR BREACH OF WARRANTY.

MANUFACTURER

Dayton Superior Corporation
 1125 Byers Road
 Miamisburg, OH 45342
 Customer Service: 888-977-9600
 Technical Services: 877-266-7732
 Website: www.daytonsuperior.com